



红精灵蓝牙游戏手柄

电子使用说明书

(PG-9085)

中国版



扫描二维码看产品教程

售后客服QQ群: 344494518
客服电话: 400-806-3006
在线时间: 周一至周五9:30-18:00

English Version



Scan me or search PEGA HK from youtube to see more online video tutorial.



Red ELF Bluetooth Controller

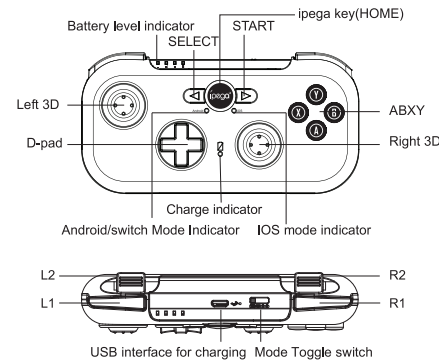
User Manual (PG-9085)

Applicable instructions

- 1.Thanks for purchasing iPega developed Red Elf Rechargeable Mini Bluetooth Game Controller.
- 2.This Gamepad support playing games on Nintendo Switch, Bluetooth enabled Android tablet/ smart phone/ TV box/ smart TV/ VR, IOS mobile phone/ tablet and Win7/ Win8/ Win10 PC without any drivers.
- 3.Easy operate with a mode select switch.
- 4.Include a protective carry case for conveniently use it while on traveling.
- 5.Include a Silicon Stand for phone, tablets and Nintendo Switch
- 6.The product with power indicate LEDs shows the battery level of the game controller.

* Due to the official game platform software upgrades or source code changes and other not resist factors caused some of the game can not be played or connected with our Gamepad, iPega company has no responsibility. iPega reserve the right of final interpretation for this.

Introduction for key functions:

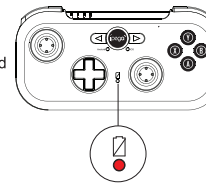


Electrical Parameters:

- 1.Working voltage: DC3.7V
- 2.Working current: 20 mA
- 3.Consecutive Usage Hours: 10H
- 4.Sleep mode current: <35uA
- 5.Charging voltage/current: DC5V/500mA
- 6.Battery capacity: 380mAh
- 7.Bluetooth transmission distance: ≤8M
- 8.Standby time: up to 30days once fully charged

Charge/ Sleep/ Wake up/Battery detection function of Gamepad:

- 1.Charging indicator will lit on during charging and will turn off after fully charged.
- 2.Sleep/Wake up function: Gamepad will enter into sleeping mode if not in use for 5 minute, and press ipega button for wake up and reconnect automatically.
- 3.Charging LED flashing quickly for low battery remind.
4. Battery detect function: After successful Bluetooth connected, the LED by the side of the controller will lit continuously for 5 seconds and remind: LED1 lit red means battery is 10%-25%; LED1, LED2 lit red means battery is 25%-50%; LED1,LED2, LED3 lit red means battery is 50%-75%, LED1, LED2, LED3, LED4 lit red means battery is 75%-100%.



Working Mode instruction:

Android system			Nintendo Switch
Mode Switch Location	HID Mode (GamePad)	Mouse Mode	Switch Mode
Power on (Press button for 2 seconds)	ipega	Under HID mode,press and hold "Y+ipega" buttons shift to Mouse Mode.	ipega
Indicator	Android	Android	Android
Remark	Under HID Mode, press Y+ipega shift to Mouse Mode; Under Mouse Mode, press X+ipega shift to HID Mode		

iOS system		Windows system	
Mode Switch Location	iCade Mode	X_Keyboard Mode	HID Mode
Power on (Press button for 2 seconds)	ipega	ipega	ipega
Indicator	IOS	IOS	Android
Remark	Default English keyboard input	support ios non-jailbreak devices	Need purchase a USB Bluetooth Adapter

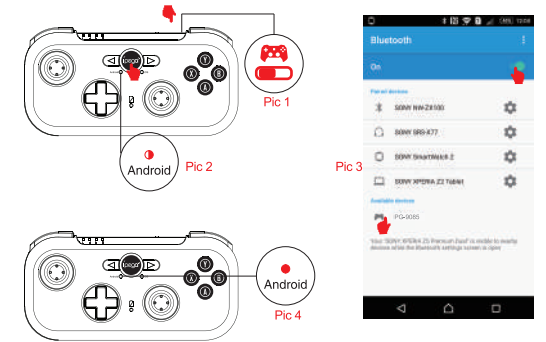
Android Game Center



Scan to download Android Game Center Android system users only

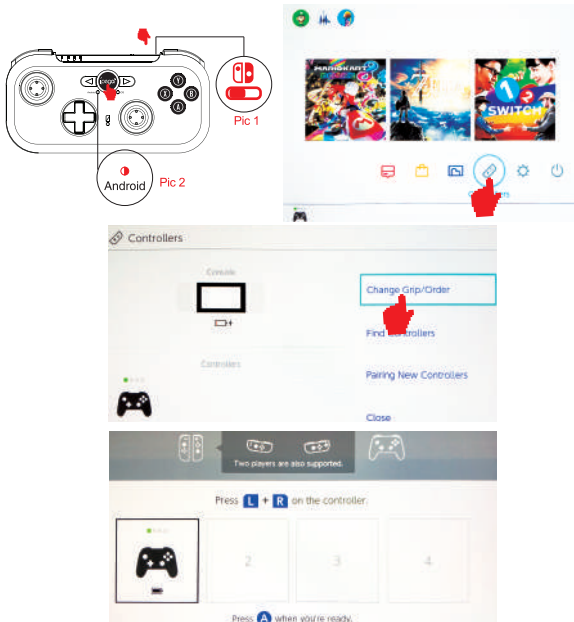
Usage of Android Devices:

- *Majority of the games in Android system supports HID mode. (When using it in a PC, the usage methods are the same with Android). Those games that are downloaded from related mobile phone game centers or emulators are also supported.
- 1.Pull the mode switch to location;(Pic 1)
 - 2.Press "ipega" for 2 seconds, Android mode indicator flash quickly. (Pic 2)
 - 3.Open the Bluetooth function on Android device, click searching.(Pic 3)
 - 4.Find and select "PG-9085" for Bluetooth pairing.(Pic 3)
 - 5.Android mode indicator turn on after Bluetooth connected.(Pic 4)
 - 6.Enter the game.(You can directly play the games which downloads from the Android game center or emulators)
 7. Or you can also download the Gamepad enabled games from Google Playstore. Below are the recommend games for reference:
Implosion / Dead Trigger / Dead Effect / CS Portable / The dungeon hunter 4 glory palace / Shadowgun: Dead Zone / SoulCraft-Action RPG etc.



Usage of Nintendo Switch Mode:

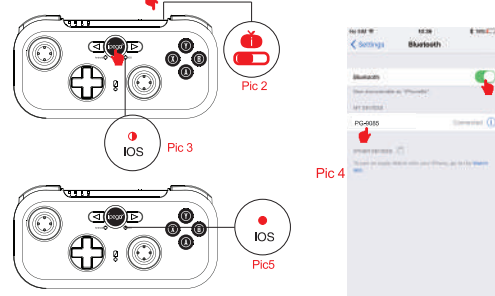
1. Pull mode switch to location.
 2. Press "ipega" for 2 seconds, Switch Mode indicator flash quickly.
 3. Enter Switch main interface, then enter key input interface as shown on below pictures .
 - 4.Switch Mode indicator turn on when Bluetooth successful paired.
 - 5.Press "SELECT" button as "-"
 - 6.Press "START" button as "+"
 7. Short Press "ipega" button is screenshot on Switch Console.
 8. Press "ipega" button 1 second returns to home page. Press "ipega" button 3 seconds to power off.
- Tips: This game controller DO NOT support vibration and gyro fuctions.



Usage of iOS iCade mode

Support iOS non jail-breaking devices. Could play games which download from Apple APP Store. Searching "iCade" from APP Store will come out vast of iCade games for playing.

- 1.Set keyboard input in English.Pic1
- 2.Pull the swift button to position.Pic2
- 3.Press and hold ipega button for 2 seconds, then release two buttons until the iOS LED flash quickly.Pic3
- 4.Open the Bluetooth on iOS device, click searching. Find and select "PG-9085" for Bluetooth pairing.Pic4
- 5.iOS indicator turn on after successful Bluetooth connected.Pic5



Below tested iCade game list for reference:

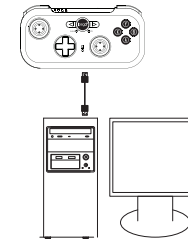
- | | |
|---|--|
| Akane the Kunoichi Lite-haruneko | Bullet Hell Infinite - Nicolas Bevilard |
| Temple Run-Imangi Studios,LLC | Retro Dust-Classic Arcade - Asteroids Vs |
| Rush city-Acceleroto | RI Productions Invaders |
| Iron Frost-YOMEN,inc. | J-Werewolf LITE - Daniel Novais |
| Recess Riot-Deceased Pixel LLC | Recess Riot Lite - Deceased Pixel LLC |
| Super Mega Worm Lite - Deceased Pixel LLC | Space Inversion FREE - merlyn lear |
| Emerald Mine - Les Bird | Vector Star Brawl - Jorge Arroyo |
| Guns n'Bottles - Ivanovich Games | The Invaders - RI Productions |
| Danmaku Unlimited 2 lite - Bullet Hell Shump | qub - Andrew Brinkhaus |
| Alien Annihilation-Free retro - space shooter | Towerman - Tomek Szczepanski |
| Heli Apps | Bunny Leap - John Carlyle |

Wired connect to PC by USB Data Cable:

*Connect game controller and PC by the USB data cable,indicator turn on while connected means game controller entered into X-INPUT mode.The game controller support most of classic large games on PC under this mode.

Such as :

- 1.Need for Speed,
- 2.Shadow Gun,
- 3.Street Fighter 5
- 4.Modern combat 5
- 5.Dead Trigger



Wireless connect to PC by Bluetooth:

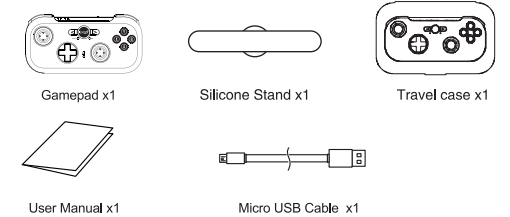
* If your PC don't have Bluetooth function, then you required to purchase a Bluetooth Dongle for Bluetooth connection.(Suggest Bluetooth 3.0+ version), Windows 10 PC required Bluetooth 4.0 Dongle.

- 1.Pull the mode switch to location at power off statge, Press "ipega" button 2 seconds to power on;
- 2.Insert the Bluetooth Dongle into the USB interface on PC device; The driver will be installed by Windows system automatically;
- 3.After the driver is installed successfully,the symbol of the Bluetooth device will be displayed in the lower right corner of the computer.
- 4.Move the mouse to the Bluetooth symbol, click the right mouse button,and select "Add device"
- 5.After selecting "Add device", the device model number (PG-9085) will be appeared, click PG-9085 for Bluetooth pairing.
- 6.Click "next", and select "Do not use the code to match", it will be automatically added after confirmed , then remind the Bluetooth was connected! After connected, the indicator light is always on.
- 7.It will be D_INPUT mode after Bluetooth connected successfully and can support the games running in simulator way.

Notes:

1. Please do not store this product in wet or high-temperature areas.
2. Don't knap, beat, drub, pierce, or try to decompose this product, to avoid unnecessary damage to the product.
3. The product has built-in batteries, and please don't discard them together with the garbages.
4. Don't charge the controller in a place near the fire or other heat source.
5. Non professional personnel should not disassemble the product, otherwise it will not be covered in the after-sales warranty service.

Accessories List:



iPega and ePega trademarks all belong to PEGA LIMITED.

Patent NO. : ZL 201730518732.4