



## 海盗者蓝牙游戏手柄 产品说明书(PG-9089)中文版

### 适用说明:

- 1.非常感谢您购买ipega公司开发生产的海盗者蓝牙手柄;
- 2.产品主要适用于在Android/iOS/Win 7/8/10系统蓝牙连接时,进行游戏操作时使用!
- 3.适用设备:智能手机/平板电脑/智能电视机、机顶盒/PC电脑
- 4.带Turbo加速功能,在游戏操作时功能更加强大,快捷!
- 5.带伸缩功能,支持6.2英寸以内手机。

\*因官方游戏平台软件升级或源代码变更等不可抗拒的因素造成部分游戏无法与本产品连接操作,我公司不承担任何责任,对此我公司保留最终解释权。

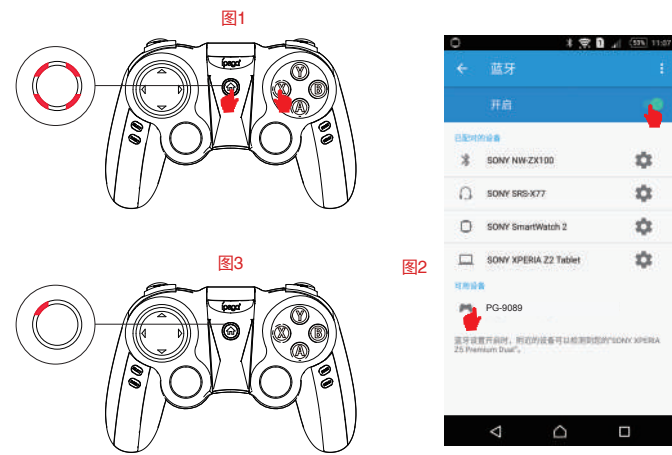
技术支持QQ群: 344494518  
客服电话: 400-806-3006  
在线时间: 周一至周五9:30-17:30



### 功能按键图示:



### 安卓设备使用说明:



- 1.同时按住X键和 **↑**键2秒,此时四个LED指示灯同时快闪,如图1。
- 2.将Android设备端的蓝牙功能打开,点击“扫描”,如图2。
- 3.当搜索到蓝牙名为“PG-9089”的设备名时,选择配对连接;如图2。
- 4.连接成功,LED1指示灯常亮!如图3。
- 5.手机扫描二维码下载游戏平台,进入平台下载所需要的游戏。

- 6.推荐游戏:
1. 穿越火线: 枪战王者
2. 绝地求生: 刺激战场/全军出击
3. 王者荣耀
4. 魂斗罗: 归来
5. 第五人格
6. 荒野行动
7. 小米枪战



### iOS游戏大厅模式

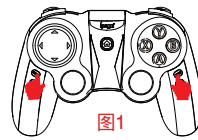


支持iOS非越狱设备,支持第三方游戏平台,此模式仅限中国大陆地区使用

- 1.同时按Y键和 **↑**键2秒,此时四个LED指示灯同时快闪,如图1。
- 2.将iOS设备端的蓝牙功能打开,当搜索到蓝牙名为“Newgamepad N1”的设备名时,选择配对连接;图2
- 3.连接成功,LED3指示灯常亮;图3
- 4.支持iOS设备9.3.0以上系统;
- 5.手机扫描二维码下载游戏平台,进入平台下载所需要的游戏。

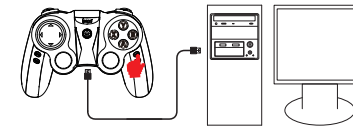
### iOS按键映射功能:

- 1.支持iOS第三方游戏平台,如需要更改按键功能,在游戏厅内操作手柄即可更改;
- 2.方格游戏大厅与艾派格游戏大厅映射方法:同时按下START+SELECT组合按键调出映射菜单(图1);
- 3.将需要映射的按键,拖到相应的触摸映射键上与之重叠保存后即可操作游戏!



### PC有线连接操作方法:

按住START键使用包装附带的USB数据线将手柄和PC设备的USB端口相连,无需安装驱动,连接成功后,LED2指示灯常亮,此时手柄为PS3模式,需要长按 **↑**键三秒切换为X-INPUT操作模式,此时LED3指示灯常亮;此模式不支持360模拟器游戏。



### 蓝牙连接PC设备操作方法

- 1.(带蓝牙功能的电脑请直接跳至第四步)手柄关机状态下,同时按住手柄X+ **↑**键搜索蓝牙设备,此时LED1-LED4指示灯同时快闪;
- 2.将蓝牙4.0接收器插入PC设备的USB接口,Windows系统会自动安装驱动程序;
- 3.驱动程序安装成功后,会在电脑的右下角显示蓝牙设备的符号;如图1;
- 4.将鼠标移动到蓝牙符号处,单击鼠标右键,选择“添加设备”;如图2;
- 5.选择“添加设备”后,会在对话框内搜索到设备的型号(PG-9089)图标;如图3
- 6.点击“下一步”,并选择“不使用代码进行配对”,确认后则会自动添加,提示蓝牙连接成功!连接OK后,手柄上的LED1指示灯常亮!如图4;
- 7.蓝牙连接成功后为D-input模式;在D-input模式下,支持以模拟器方式运行的游戏!



### 手柄充电/休眠/唤醒功能:

- 1.手柄在没连接状态下充电时,4个LED指示灯同时慢闪,充电后熄灭!当在蓝牙连接状态下充电时,当前模式灯慢闪,充电后常亮!
- 2.睡眠/唤醒功能:游戏手柄在5分钟内不使用会进入休眠状态,当需要重新使用时需按HOME键唤醒即可回连;
- 3.电池电量不足时,当前模式指示灯快闪提示;



### TURBO 功能

- 1.动作键包括(A/B/X/Y、R1、L1)六个按键,均可使用TURBO功能。
- 2.任何动作键都可以手动设置TURBO开关。
- 3.设置方式:长按动作键,再轻按TURBO键开启,长按动作键,再轻按TURBO键,TURBO功能关闭。
- 4.手柄关机、断电、休眠、重启手柄时,之前设置Turbo功能会自动清除,若启用Turbo功能时,必须重新设置。

### 鼠标/多媒体功能

- 1.多媒体功能,需在鼠标模式下进行操作,可控制音乐播放;
- 2.设备与手柄配对连接成功后,短按 **↑**键可切换至鼠标模式;此时LED2灯亮;
- 3.在鼠标模式下,各按键功能如下(iOS系统设备因系统限制无鼠标功能,多媒体功能可正常使用):  
Y键:音量+; A键:音量-; X键:上一曲; B键:下一曲; L2键:播放/暂停; L1键:鼠标左键;  
R2键:播放/暂停; R1键:鼠标右键;左3D:鼠标快移动;右3D:鼠标慢移动;
- 4.如需切换回游戏模式请短按 **↑**键。

### 操作使用模式:

Android 系统		
	安卓标准游戏模式	鼠标模式
模式配对 (长按2秒)	X+ <b>↑</b>	短按 <b>↑</b>
指示灯	LED1	LED2
备注	在任意游戏模式下短按 <b>↑</b> 都可切换成鼠标模式	
iOS 系统		
	iOS游戏大厅模式	Windows系统 D-input模式
模式配对 (长按2秒)	Y+ <b>↑</b>	X+ <b>↑</b>
指示灯	LED3	LED2
备注	支持iOS非越狱设备	需蓝牙适配器

### 电性参数:

- 1.工作电压: DC3.7V
- 2.工作电流: 35 mA
- 3.持续使用时: 6H
- 4.静态电流: <35uA
- 5.充电电压/电流: DC5V/500mA
- 6.蓝牙传输距离: ≤8M
- 7.电池容量: 300mAh
- 8.待机时间: 满电放置30天

### 注意事项:

- 1.请不要把本产品放在潮湿或高温地方存储;
- 2.不要敲击、摔打、棒打、刺穿、或试图去分解本产品,以免对产品造成不必要的损害;
- 3.产品内置电池,请勿和垃圾一起丢弃;
- 4.不要在靠近火或其他热源的地方对手柄进行充电。
- 5.非专业人员请勿拆卸本产品,否则不在售后保修服务内;

### 常见问题:

- 问: 为什么在iOS手机“App Store”里下载的游戏用手柄操控不了?  
答: 因iOS的协议限制,iOS的游戏需在游戏平台内下载游戏,平台内的游戏跟手柄适配过的,(之前已经下载的游戏要卸载,以免有冲突)。
- 问: 游戏时按键不受控,或混乱怎么办?  
答: 将手柄关机重新连接,连接过程中请不要触碰其它按键
- 问: 手机蓝牙打开无法搜索到手柄?  
答: 1.取消掉手柄与手机之前的蓝牙配对设备名,重新开启手机蓝牙搜索配对  
2.使用回形针按下手柄背面的复位孔
- 问: 新手柄为什么不开机?  
答: 1.新手柄一般电量不足,请用包装盒内的USB线接上5V充电器,给手柄充电,充满电后再按开机键开机。  
2.如果手柄接上电源(5V)后指示灯还是不亮,请用回形针按下手柄背面的复位孔

iPega与ePega商标同属于PEGA LIMITED所有。



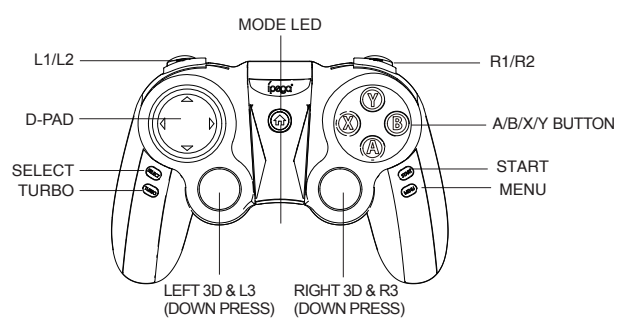
## Pirate Bluetooth Game Controller User Manual(PG-9089)

### Applicable instructions

- 1.Thanks for purchasing iPega developed Pirate Bluetooth Gamepad.
- 2.This Gamepad support playing games on Bluetooth enabled Android tablet / smart phone / TV box / smart TV / VR, iOS mobile phone / tablet, and Win7 / Win8 / Win10 PC without any drivers.
- 3.Multimedia player buttons "volume +, -, "last ", "next ", "Play / Pause" can be used under Android / iOS system devices.
- 4.With extending tablet holder, maximum extending size up to 280mm, better fit for game playing on large size tablets.
- 5.Ergonomic streamlining and comfortable hand hold feelings.

\*Due to the official game platform software upgrades or source code changes and other non resist factors caused some of the game can not be played or connected with our Gamepad, iPega company has no responsibility, iPega reserve the right of final interpretation for this.

### Electrical Parameters:



### Usage of Android device



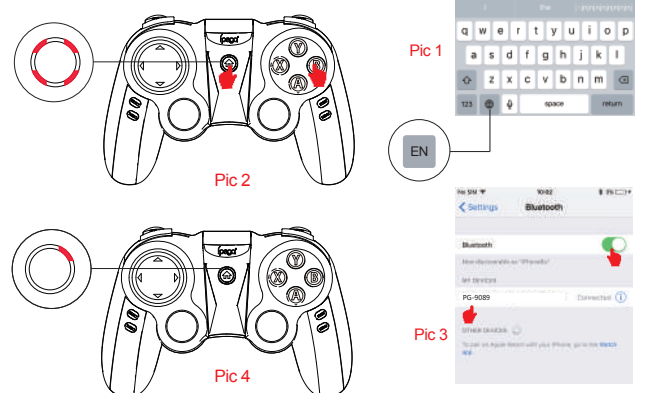
1. Press and hold X button + **↑** button for 2 seconds at the same time, 4 LED indicator lights will blink simultaneously in a rapid manner at this moment.
2. Open the Bluetooth on Android device, click searching, find and select "PG-9089" for Bluetooth pairing. Refer Pic2
3. LED1 lit on after Bluetooth connected. Refer Pic3
4. Then you are ready for playing games on Android devices.

### Important notice for games capability in this mode:

1. Download simulator games from the third party Games App. Scan the QR code or input www.xiaojj001.com to your phone browser to download the Android Game Center App, there has vast of most popular available games supportable.
2. Download gamepad enabled games (similar console games as below) from Google Playstore which you can play directly. You can map button in the game settings for some of the game, such as ShadowGun. Recommend console game list: Implosion / Dead Trigger / Dead Effect / CS Portable / The dungeon hunter 4 glory palace / Shadowgun: DeadZone / SoulCraft - Action RPG
3. If you want play some of the online games such as PUBG, Mobile lenges, Rules of survival etc which downloaded from Google Playstore, then you need download the Octopus driver for buttons mapping, check the operation guide video on PEGA HK Youtube.



### Usage of iOS devices



Could play some icade games which download from Apple APP Store.

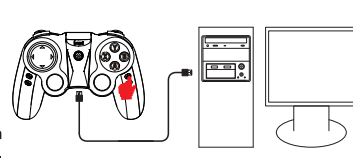
1. Firstly, you need to set mobile phone keyboard input in English. Refer Pic1
2. Press and hold B button + **↑** button for 2's, then release two buttons until all 4 LED indicator lights flash quickly. Refer Pic2
3. Open the Bluetooth on iOS device, click searching, Find and select "PG-9089" for Bluetooth pairing. Refer Pic3
4. LED4 lit on after Bluetooth connected. Refer Pic4

Support parts of games under iCade mode:

- 1: Torpedo Strike Free
- 2: Invasion Strike
- 3: Guns n' Bottles
- 4: Marauder
- 5: Galaxy Invaders - Strike Force Alien Hit
- 6: Space Inversion FREE
- 7: Space Inversion FREE2
- 8: Towerman

### Usage of Windows PC by using USB data cable connecting:

1. Hold down the START key on gamepad to connect directly to the computer's USB port via the USB cable. At this point entered the USB wired mode.
2. After the wired mode connection is OK, the LED2 indicator is on. In this case, it is the PS3 mode, you can play games on sony PS3.
3. Press the **↑** key for three seconds to switch to X-input mode and playing of 360 games on PC. The LED3 indicator lights up once successful connected.

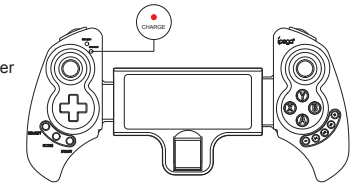


### Usage of Windows PC by Bluetooth connecting:

1. With the gamepad off, press and hold gamepad button X + **↑** simultaneously for searching the Bluetooth device.
2. Insert Bluetooth 4.0 Dongle (Not included in the package suggest purchase Bluetooth 4.0+ Dongle Separately) into the USB interface on PC device; Windows system will automatically install the driver.
- 2.1 After the driver is installed successfully, the symbol of the Bluetooth device will be displayed in the lower right corner of the computer.
- 2.2 Move the mouse to the Bluetooth symbol, click the right mouse button and select "Add Device";
- 2.3 After selecting "Add Device", the icon of the model of the device (PG-9089) will be searched in the dialog box.
- 2.4 Click "Next" and select "Do not use the code to match", it will be automatically added after confirmed, then remind the Bluetooth was connected successfully! After connected, the SEARCH indicator on the gamepad is always on!
- 2.5 Then you can play the downloaded simulator games runs in D-input mode on a Windows PC.

### Charge/ Sleep/ Wake up function of Gamepad:

1. Charge indicator will lit on while charging and will turn off after fully charged.
2. Sleep/Wake up function: Gamepad will enter intosleeping mode if not in use for 5 minute, and pressHOME button for wake up and reconnect automatically.
3. Charge indicator flashing quickly for low battery remind



### TURBO function

1. Six action buttons (A/B/X/Y, R1/R2 L1/L2) can be set manually with TURBO function.
2. Setting method: Press the action button for a long time, and then press the TURBO key to turn it on. Press the action key for a long time, and then press the TURBO key again. The TURBO function will be turned off.
3. After the gamepad turned off, shutted down, slept or restart the gamepad. The previous TURBO setting will not be stored. If you want enable Turbo function buttons again, then please reset TURBO function.

### Operation instructions:

1. Six action buttons (A/B/X/Y, R1/R2 L1/L2) can be set manually with TURBO function.
2. Setting method: Press the action button for a long time, and then press the TURBO key to turn it on. Press the action key for a long time, and then press the TURBO key again. The TURBO function will be turned off.
3. After the gamepad turned off, shutted down, slept or restart the gamepad. The previous TURBO setting will not be stored. If you want enable Turbo function buttons again, then please reset TURBO function.

### Operation instructions:

Android system		
	Android general mode (HID Gamepad Mode)	Mouse Mode
Bluetooth pairing buttons (Press and hold on 2's)	X+Home	Y+Home
Indicator	LED1	LED2
Remark	Freely dynamic swift to mouse mode from HID or iCade mode	

iOS system		Windows system
	iCade Mode	D-input Mode
Bluetooth pairing buttons (Press and hold on 2's)	B+Home	X+Home
Indicator	LED4	LED2
Remark	Default English keyboard input	Need buy a Bluetooth 4.0 receiver

### Electrical Parameters:

1. Working voltage : DC3.7V
2. Working current : 30 mA
3. Continuous gameplay time : 10H
4. Static current : <35uA
5. Charging voltage/current : DC5V/500mA
6. Bluetooth transmission distance : 8M
7. Battery capacity : 300mAh
8. Standby time : up to 300days once fully charged

### Notes:

1. Please do not store this product in wet or high-temperature areas.
2. Don't knap, beat, drub, pierce, or try to decompose this product, to avoid unnecessary damage to the product.
3. The product has built-in batteries, and please don't discard them together with the garbages.
4. Don't charge the controller in a place near the fire or other heat source.
5. Non professional personnel should not disassemble the product, otherwise it will not be covered in the after-sales warranty service.

### Frequency asked question to operate this Gamepad

- Q1: Why I can't playing games on iOS device while Bluetooth connected?  
A1: Because iOS system authorization limited for the games, so only parts of iCade games and some of the Gamepad buttons functional. We recommend use this gamepad playing more games on Android device and Windows PC.
- Q2: I opened Bluetooth searching, but still can't pair it with my device?  
A2: Please turn off and ignore the previous connected device. Then reopen Bluetooth for connect. If you still can't connect, then please use the needle press the RESET button on the back of Gamepad for 5 seconds. Then reconnect the Bluetooth.
- Q3: I can't turn on the Gamepad.  
A3: Please recharge the Gamepad before you use it at the first time or use it again after a long period. Please check the charge indicator light turn on while charging and will turn off once fully charged. If the Charge indicator do not light on while charge cable connected to the power source, then please try to change a charge cable or use the needle press the RESET button on the back of Gamepad for 5 seconds.
- Q4: Joystick moving itself or other buttons works improper when entered the game.  
A4: Please use the needle press the RESET button on the back of Gamepad for 5 seconds. Please be reminded don't touch wrong buttons while Bluetooth pairing.

iPega and ePega trademarks all belong to PEGA LIMITED.