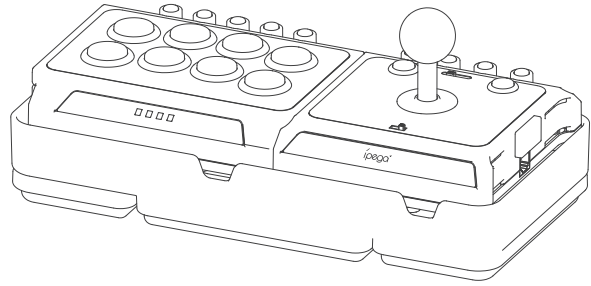


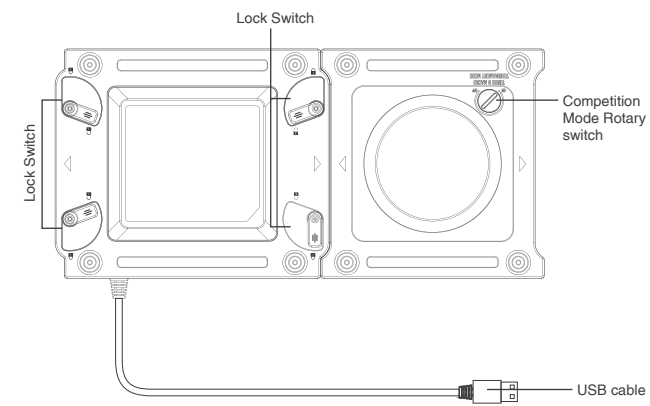
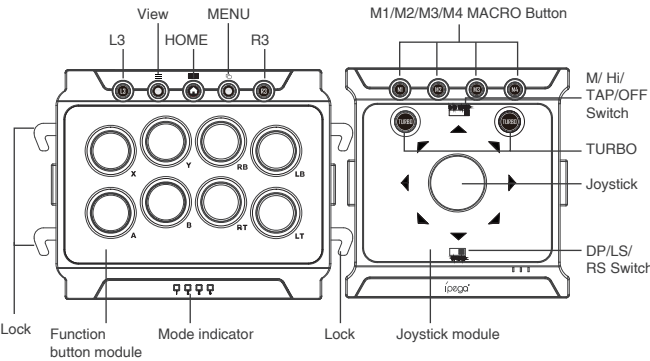


# King of Fighter

User Manual(PG-9059)



## Instruction for key function:



## Application Instruction:

- The product is used for playing games on Android/PC/PS3/Switch/PS4 game console by wired connection;
- The left and right parts of this product can be operated separately, can also be connected with a RJ45 LAN cable, Left and right changeable, flexible to use;
- With a base, can play games by putting the base on your legs, without any restraint, and enjoy the visual impact brought by the game;
- The color of the product is black and red, cool appearance which is a must-have game equipment for fighting game player! Ergonomic structure, bring comfortable hand feeling.

\*Due to the official game platform software upgrade or source code changes and other not resist factors caused of some games can not be played or connected with our product. Our company has no responsibility, we reserves the right of final interpretation for this.

## Application:

### Mode and connection method 【Default setting is PS4 Mode(LED3-LED4)】

- PC(X 360) Mode (LED1): Press and hold "X" button (DON'T RELEASE) then connect the USB cable to the PC console then enter X\_360 Mode This Mode compatible with PC.
- Android Mode (LED3): Press and hold "A" button (DON'T RELEASE) then connect the USB cable to the Android devices then enter Android Mode This Mode compatible with Android devices.
- Switch Mode (LED4): Press and hold "B" button (DON'T RELEASE) then connect the USB cable to the Switch console then enter Switch Mode This Mode compatible with Switch.
- P3/PC(PS3) Mode (LED2): Press and hold "Y" button (DON'T RELEASE) then connect the USB cable to the P3/PC console then enter Switch Mode This Mode compatible with PC/PS3 Console.

## Joystick Function Switch (DP/ LS/ RS):

This switch has three functions,and can be used to switch the function of the Joystick Part. When turn the switch to "DP", Joystick can be used as Directional Pad When turn the switch to "LS", Joystick can be used as Left Joystick When turn the switch to "RS", Joystick can be used as Right Joystick

## TURBO Speed Switch ( M/ HI/ TAP/ OFF ) :

This Speed Switch (M/ HI/ TAP/ OFF) is used to control the acceleration frequency of "TURBO" function, easy to operate. When turn the switch to "M" is Low speed.

When turn the switch to "HI" is High speed.

When turn the switch to "TAP" you can customize the speed follow your habits

## " TAP " ( Frequency Customize ) Function Setting:

- This is a customize function for TURBO function's acceleration frequency. When turn the switch to "TAP", press "TURBO" button and the button you want to set with TURBO function, at the same time, "TURBO" button will become blue, then press the button for 5 times with the speed you want, "TURBO" button will become red show that its settings have been successful! At this point, press the button that has been set and it will attack at that speed.
- When turn the switch to "OFF", the "TURBO" and "TAP" function of the button are disabled.

## How to cancel "TURBO" and "TAP" Function:

If you want to cancel the "TURBO" or "TAP" Function, just press the button need to be canceled and press "TURBO" button twice, at this time the red light of "TURBO" will turn off.

## "MACRO" function:

There are 4 "MACRO" buttons. After pressing the "MACRO" button for 3 seconds, the button becomes blue, indicating that you can start setting. After press the combination/-multiple buttons you want to set, press the "MACRO" button to confirm. At this time, the "MACRO" button becomes Red, show that the settings have been successful! For example: after press "M1" button for 3 seconds, the " M1 " button becomes blue, then press the combination/multiple buttons you want to set, after that press " M1 " button to confirm, the " M1 " button becomes red! At this time, the settings have been successful, you can use the functions you set!  
a. How to use the "MACRO" function: Press the red "MACRO" button that has been set, and its functions that has stored will be released in sequence in an instant;  
b. How to cancel the "MACRO" function: The "MACRO" button is red show that has been set function successful. After press the button for 5 seconds (DON'T RELEASE when the light becomes blue), the light will turn off, the function of this "MACRO" button is canceled successfully.  
Note: The "MACRO" function can be combined up to 9 keys at a time.

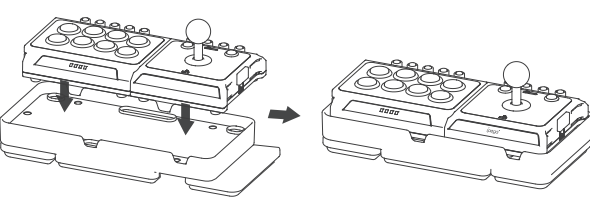
## Memory Function:

When the "TURBO" and "MACRO" functions are set, unplug the USB cable from the console . When you plug in the console again, the functions that you set previously are still available, no need to set them again when you use it. ("TURBO" function only saves "TAP" settings).

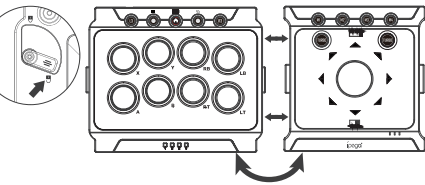
## Competition Mode:

- In order to allow gamer use this product to participate in the actual game competition, there is a rotary switch at the bottom of the product to disable all "TURBO" and "MACRO" functions. Users need to rotate the switch with a coin or screwdriver.
- When turn the switch to "ON", the "TURBO" and "MACRO" functions are available, "MACRO" functions are free to set the combination/multiple buttons.
- When turn the switch to "OFF", the "TURBO" and "MACRO" functions are disabled;
- After turned the switch to "OFF", only the "TURBO" and "MACRO" functions are disabled. The function that set previously will still be stored in the product and will not be removed. When turn the switch to "ON", the function that set previously will be restored, and no need to set again.

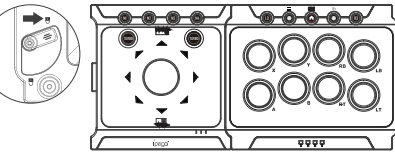
## Assembly diagram:



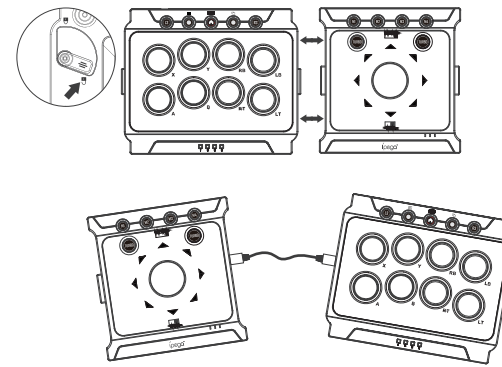
1. After turning lock switch(At the bottom) to the unlock position, the joystick part and the button part can be separated and interchanged.



2.After the joystick part is combined with the button part, turn lock switch (At the bottom) to the locked position, and the left and right parts will be fixed together and cannot be separated.



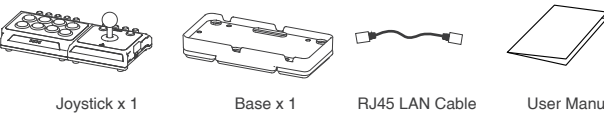
3. After the joystick part is separated from the button part, the two parts can be connected through the RJ45 LAN cable for separate operation.



## Notes:

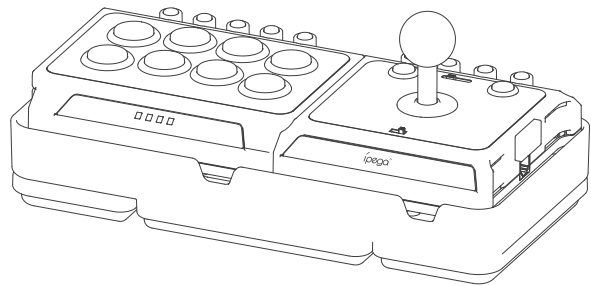
- Please do not store this product in wet or high-temperature areas.
- Don't beat, drub, pierce, or try to decompose this product, to avoid unnecessary damage the product.
- Non professional personnel should not disassemble the product, otherwise it will not be covered in the after-sales warranty service.

## Accessories List:

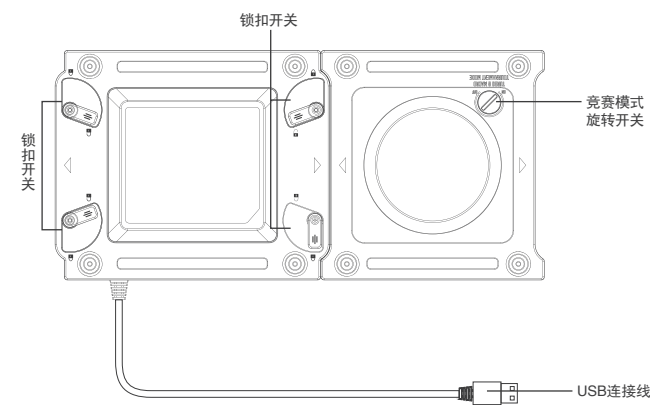
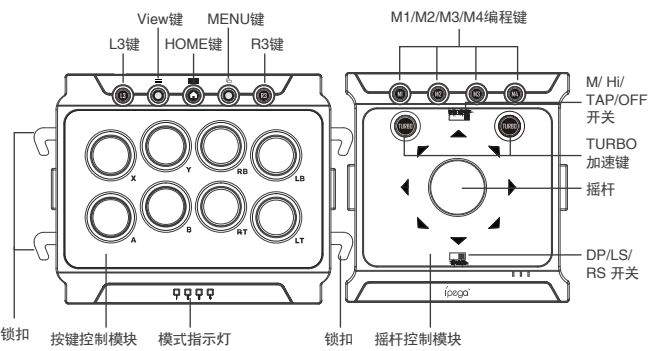


# 亚瑟格斗王

产品说明书(PG-9059)



## 产品外观图示



## 产品特点:

- 产品适用于P4/N-Switch/Android/PC/P3游戏主机上有线连接, 进行游戏操作时使用;
  - 产品还可以采用左右主体部份分离式操作,通过连接线将摇杆与功能按键部分连接起来并可左右任意对换操作游戏,使用起来灵活多变;
  - 游戏摇杆附带有底座,摇杆底座可以支撑在双腿上操作游戏,无所拘束,尽情释放游戏所带来的视觉冲击;
  - 产品外观表面采用黑红配色,是格斗游戏发烧友必备的游戏外设装备!结构符合人体工学,手感舒适;
- \*因官方游戏平台软件升级或源代码变更等不可抗力因素造成部分游戏无法与本产品连接操作, 我公司不承担任何责任. 对此我公司保留最终解释权.

## 产品使用说明:

### 模式说明及连接方法

- P4模式(LED3-LED4): 将摇杆的USB连接线插入到P4的USB端口,连接成功后LED3-LED4指示灯长亮,此时为P4模式,此模式适用于连接P4游戏主机。
- PC(X 360)模式(LED1): 按住X键不要松开, 同时将摇杆的USB连接线插入到PC的USB端口, 连接成功后LED1指示灯长亮,此时为X 360模式,此模式适用于连接PC设备。
- Android模式(LED3): 按住A键不要松开, 同时将摇杆的USB连接线插入到Android设备的USB端口,连接成功后LED3指示灯长亮,此时为N-Switch模式,此模式适用于连接Android系统设备。
- Switch模式(LED4): 按住B键不要松开, 同时将摇杆的USB连接线插入到N-Switch主机的USB端口,连接成功后LED4指示灯长亮,此时为N-Switch模式,此模式适用于连接N-Switch。
- P3/PC(PS3)模式(LED2): 按住Y键不要松开, 同时将摇杆的USB连接线插入到P3/PC主机的USB端口,连接成功后LED2指示灯长亮,此时为P3/PC(PS3)模式, 此模式适用于连接PC或者P3游戏主机。

## 摇杆功能切换开关 (DP/ LS/ RS):

拨动此开关可切换摇杆功能,当开关切换到 DP 档位时, 摇杆为游戏手柄十字方向键的操作功能; 当开关切换到 LS 档位时, 摇杆为游戏手柄左 3D摇杆的操作功能; 当开关切换到 RS 档位时, 摇杆为游戏手柄右 3D 摇杆的操作功能;

## TURBO档位开关 (M-低速/HI-高速/TAP-自定义速度/OFF) :

此四档开关 (M/ HI/ TAP/ OFF) 是切换 "TURBO" 所控制的功能,为了在游戏中方便随意操作, 产品对TURBO功能的释放频率进行了低速和高速及自定义速度设置: 当开关切换到 "M" 档位时, 为低速度连打;

当开关切换到 "HI" 档位时, 为高速度连打;

当开关切换到 "TAP" 档位时, 为自定义连打加速;

" TAP " (自定义加速) 功能设置:

- 此功能是针对 "TURBO" 所控制的单个功能按键释放频率的自定义: 当开关拨到TAP档位,同时按住TURBO按键和想要设置的功能键, 此时TURBO键亮蓝色, 再将想要设置的按键以自己想要的间隔时间按下5 次后, TURBO按键变成红色表示录入成功! "TURBO" 按键确认录入后, 按下所设置的按键, 该按键将会按照设置时所按的实际间隔频率发出按键功能。

2.当开关拨至 OFF 时, 按键所设置的 "TURBO" 与 "TAP" 功能将被禁止使用。

"TURBO" 和 "TAP" 功能的解除:

已经成功录入 "TURBO" 或 "TAP" 功能, 如果要解除此功能,只需按下需要取消的功能键, 同时连续快速按 "TURBO" 按键2次后,该功能解除成功,且 "TURBO" 红色灯会熄灭;

## " MACRO " (编程)功能:

本机共有4个MACRO功能按键,在按下MACRO 按键 3 秒后, 按键蓝色灯点亮, 表示可以开始设置被编程的功能按键. 按完功能按键后, 再按M1键进行确认, 此时M1键变成红色, 表示录入成功!  
例如: 按下M1键3秒后, M1键点亮为蓝色, 再按下需要设置的组合/多个按键, 再按M1键进行确认, 此时M1键变成红色! 表示录入成功,可以开始使用M1键的编程功能了!  
a. "MACRO" 功能的使用: 按下已经设置好的红色 "MACRO" 按键, 其所储存编辑的操作程序将按顺序在瞬间进行释放相应的功能;  
b. "MACRO" 功能的解除: 已经成功录入编程键的 MACRO 按键为红色, 当长按MACRO 按键5秒后 (长按过程中显示蓝色时不要松开),该 MACRO 键的编程功能解除成功,且红色灯熄灭;

注意: MACRO功能一次最多能进行9个键以内的组合。

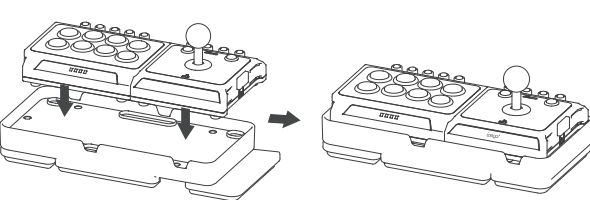
## 掉电保存功能:

当设置了相关的 "TURBO" "MACRO" 功能后, 将产品的 USB 数据线拔出主机后, 再插入主机时,之前所设置的的功能依然保存,即再次使用时无需重新设置 ("TURBO" 只保存 "TAP" 部分设置) 。

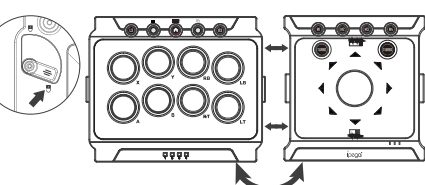
## 竞赛模式:

- 为了让本产品可以参加摇杆游戏的实战竞赛, 产品底部有一个旋钮开关可以让 TURBO 和 MACRO 功能全部禁止, 用户需要用硬币或者螺丝刀等器件来旋转此开关。
- 当开关逆时针旋转至 ON 状态时, 产品具备有正常的 TURBO 和 MACRO 功能, MACRO 键可以随意的编辑程序与消除程序。
- 当开关顺时针旋转至 OFF 状态时, TURBO 和 MACRO 功能都将被暂时禁用;
- 此开关转至"OFF"后只是禁止了 TURBO 和 MACRO 功能的发挥, 之前所编辑设置的程序还是会保存在产品内部的存储器内不会被永久性清除, 当开关转至"ON"后, 原来所编辑设置的程序依旧会还原, 不需要用户重新设置。

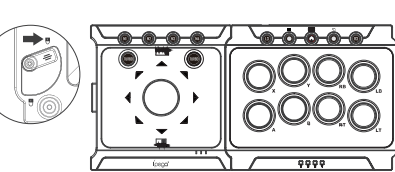
## 装配示意图



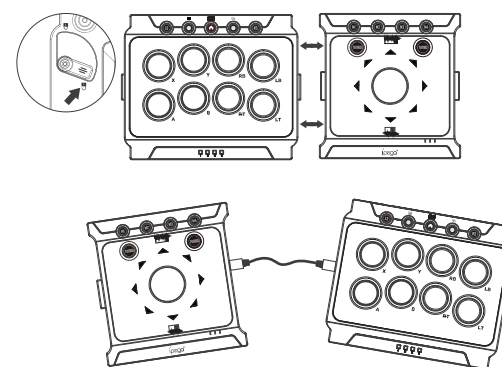
1.将底部锁扣开关拨至开锁位置后,摇杆控制模块与按键模块可分离与互换位置。



2.摇杆控制模块与按键模块组合后,将底部锁扣开关拨至锁定位置,左右控制模块将固定在一起不可分离。



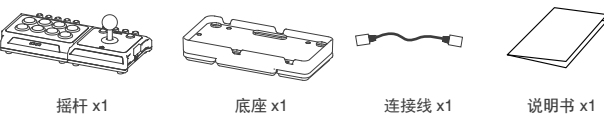
3.摇杆控制模块与按键模块分离后,可通过连接线将两个控制模块连接起来,进行分离式操作。



## 注意事项:

- 请不要把本产品放在潮湿或高温地方存储;
- 不要敲击、摔打、棒打、刺穿,或试图去分解本产品, 以免对产品造成不必要的损害;
- 非专业人员勿拆卸本产品,否则不在售后维修服务内;

## 配件清单:



售后客服QQ群: 837350687

客服电话: (0755) 2791 8998

在线时间: 周一至周五9:30-17:30



ipega官方微信公众号